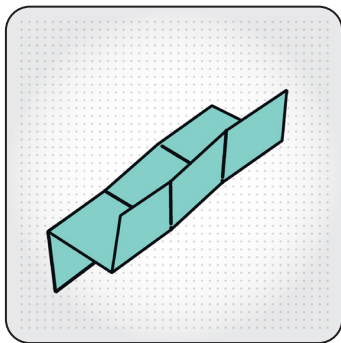


HOW TO USE YOUR FIT TEST

STEP-BY-STEP GUIDE



STEP 1

Open kit and unfold collection paper.



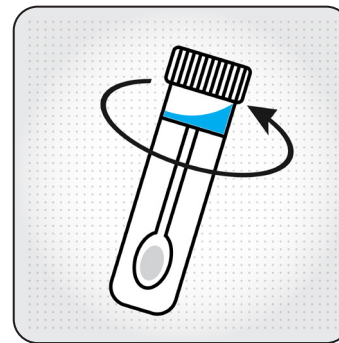
STEP 2

Place collection paper between toilet seat and water of toilet.



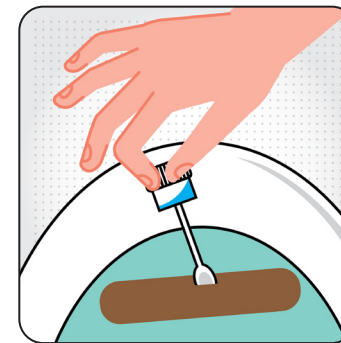
STEP 3

Deposit stool onto collection paper.



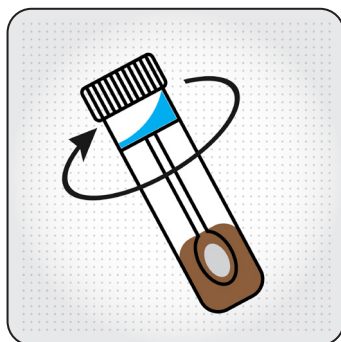
STEP 4

Unscrew lid of collection bottle. **KEEP ALL LIQUID IN THE BOTTLE.**



STEP 5

Using probe attached to bottle top, collect stool. Place inside bottle. *(Must take 6 samples from multiple locations on stool.)*



STEP 6

After all samples are collected close cap of collection bottle securely. **DO NOT REOPEN.** Flush collection paper and stool.



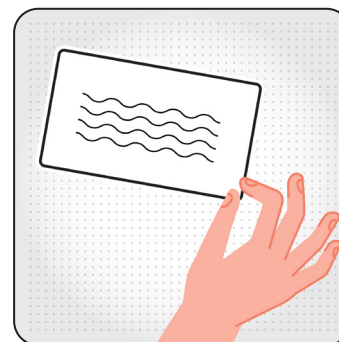
STEP 7

Fill out all information on bottle, then wrap the collection bottle with absorbent pad. Place inside Bio hazard bag.



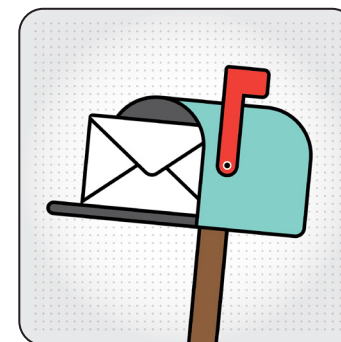
STEP 8

Wash hands thoroughly.



STEP 9

On provided card, write the collection date and time on the space provided. Samples will not be accepted without this information.



STEP 10

Return the sample in the provided pre-paid envelope **WITHIN 48 HOURS OF STOOL COLLECTION.**